



PNEUMATIC PRODUCTS

CATALOG #1.1

INSIGHT SQUARE (PVT) LTD.



订购号 / Order

2L — **170** — **15** — **AC110V** — **D**

规格代码
2L: 蒸汽型二位二通电磁阀
Specification code
2L: Steam type two position two way solenoid valve

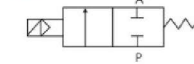
流量孔径
Aperture of Flow Rate
170:17mm
200:20mm
300:30mm
500:50mm

接管口径
Joint Pipe Bore
10: 3/8" 35:1 1/4"
15:1/2" 40:1 1/2"
20:3/4" 50:2"
25:1"

标准电压
Standard Voltage
DC12v
DC24v
AC36v 50Hz/60Hz
AC110v 50Hz/60Hz
AC220v 50Hz/60Hz
AC380v 50Hz/60Hz

接线形式
空白: 表示引线式铁壳线圈
D: 接线盒式封塑线圈
E: 防爆线圈
G: 防水线圈
Electrical entry
Blank: Lead Wire Type
D: Join Connector
E: Blast-proof Coil
G: Water-proof Coil

图形符号 / Symbol



2L-170-15

订购号 / Order

2W — **025** — **08** — **F** — **AC110V** — **D**

规格代码
2W: 二位二通电磁阀 (直动式)
2WH: 二位二通电磁阀 (高压直动式)
Specification code
2W: Two position two way solenoid valve(direct drive type)
2WH: Two position two way solenoid valve(high pressure direct drive type)

流量孔径
Aperture of Flow Rate
012:1.2mm
020:2.0mm
025:2.5mm
040:4.0mm

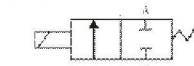
接管口径
Joint Pipe Bore
06: 1/8" 10: 3/8"
08: 1/4" 10: 3/8"
06: 1/8" 08: 1/4" 10: 3/8"

安装形式
空白: 管接式
F: 带法兰型
Installation
Blank: Pipe Joint type
F: Flange Type

标准电压
Standard Voltage
DC12v
DC24v
AC36v 50Hz/60Hz
AC110v 50Hz/60Hz
AC220v 50Hz/60Hz
AC380v 50Hz/60Hz

接线形式
空白: 表示引线式铁壳线圈
D: 接线盒式封塑线圈
E: 防爆线圈
G: 防水线圈
Electrical entry
Blank: Lead Wire Type
D: Join Connector
E: Blast-proof Coil
G: Water-proof Coil

图形符号 / Symbol



2W-025-08



2W-040-10

订购号 / Order

2W — **160** — **15** — **F** — **AC110V** — **D**

规格代码
2W: 二位二通电磁阀 (直动式)
Specification code
2W: Two position two way solenoid valve (direct drive type)

流量孔径
Aperture of Flow Rate
160:16mm
200:20mm
250:25mm
350:35mm
400:40mm
500:50mm

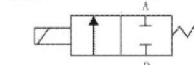
接管口径
Joint Pipe Bore
10: 3/8" 15:1/2" 20:3/4" 25:1" 35:1 1/4" 40:1 1/2" 50:2"

安装形式
空白: 管接式
F: 带法兰型
Installation
Blank: Pipe Joint type
F: Flange Type

标准电压
Standard Voltage
DC12v
DC24v
AC36v 50Hz/60Hz
AC110v 50Hz/60Hz
AC220v 50Hz/60Hz
AC380v 50Hz/60Hz

接线形式
空白: 表示引线式铁壳线圈
D: 接线盒式封塑线圈
E: 防爆线圈
G: 防水线圈
Electrical entry
Blank: Lead Wire Type
D: Join Connector
E: Blast-proof Coil
G: Water-proof Coil

图形符号 / Symbol



2W-160-15D



2W-160-15

订购号 / Order

AC	2000	02	D	W
规格代码 Specification code AC: 二、三联件 AF: 空气过滤器 AR: 减压阀 AL: 油雾器 AW: 过滤减压阀	系列代号 Series code 1000系列 1000 Series 2000系列 2000 Series 3000系列 3000 Series 4000系列 4000 Series 5000系列 5000 Series	接管口径 Joint Pipe Bore M5: M5 01: G1/8 02: G1/4 03: G3/8 04: G1/2 06: G3/4	排水方式 Drain Type 空白: 差压排水 M: 手动排式 D: 自动排水式 Blank: Differential pressure draining type M: Standard manual type D: Automnatic draining type	颜色代码 Color code 空白: 金黄色 W: 白色 Blank: Auratus W: White

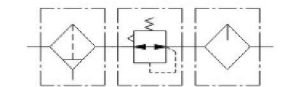
技术参数 / Specifications

保证耐压力 /Ensured Pressure Resistance	1.5MPa(15kgf/cm ²)
最高使用压力 /Highest Working Pressure	1.0MPa(10kgf/cm ²)
环境及流体温度 /Ambient and Fluid Temperature	5~60°C
* 过滤精度 /* Filter Fineness	25µm
建议用油 /Recommended Oil Use	透平1号油 /Turbine No.1 Oil ISOVG32
容器材料 /Container Material	聚碳酸脂 /Polycarbonate
防护罩 /Protective Cover	AC1000~2000(无) / (Not Available) AC2500~5000(有) / (Available)
调压范围 /Pressure Regulating Range	AC1000:0.05~0.7MPa(0.5~7kgf/cm ²) AC2000~5000:0.05~0.85MPa(0.5~8.5kgf/cm ²)
阀型 /Valve Type	带溢流型 /With Overflow

产品展示 / Product display



图形符号 / Symbol



型号 Model	规格 / Specifications						配件 / Accessories		
	组件 / Assembly			*额定流量 Rated Flow (L/min)	**接管口径 Port Size (G)	压力表口径 Pressure Gauge Size	重量 Weight (kg)	托架 Bracket (2个)	压力表 Pressure Gauge
过滤器 Filter	减压阀 Regulator	油雾器 Lubricator							
AC1000-M5	AF1000	AR1000	AL1000	90	M5	1/16	0.26	Y10L	G27-10-R1
AC2000-01	AF2000	AR2000	AL2000	500	1/8	1/8	0.74	Y20L	G36-10-01
AC2000-02					1/4				
AC2500-02	AF3000	AR2500	AL3000	1500	1/4	1/8	1.04	Y30L	G36-10-01
AC2500-03					3/8				
AC3000-02	AF3000	AR3000	AL3000	2000	1/4	1/8	1.18	Y30L	G46-10-02
AC3000-03					3/8				
AC4000-03	AF4000	AR4000	AL4000	4000	3/8	1/4	2.14	Y40L	G46-10-02
AC4000-04					1/2				
AC4000-06	AF4000-06	AR4000-06	AL4000-06	4500	3/4	1/4	2.47	Y50L	G46-10-02
AC5000-06	AF5000	AR5000	AL5000	5000	3/4	1/4	3.82	Y60L	G46-10-02
AC5000-10					1				

* 供应压力为 0.7MPa(7.1kgf/cm²)设定压力为 0.5MPa(5.1kgf/cm²)的情况下

**Under the circumstance that the supply pressure is 0.7MPa(7.1kgf/cm²)and set pressure is 0.5MPa(5.1kgf/cm²)

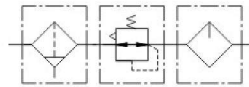
**接管口径 另有 Rc、NPT 螺纹可供选择:
Rc.and NPT port size are available.



产品展示 / Product display



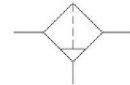
图形符号 / Symbol



型号 Model	规格 / Specifications					配件 / Accessories		
	组件 / Assembly		*额定流量 Rated Flow (L/min)	**接管口径 Port Size (G)	压力表口径 Pressure Gauge Size	重量 Weight (kg)	托架 Bracket (2个)	压力表 Pressure Gauge
	过滤减压阀 Filter with pressure reducer	油雾器 Lubricator						
AC1010-M5	AW1000	AL1000	90	M5	1/16	0.22	Y10T	G27-10-R1
AC2010-01	AW2000	AL2000	500	1/8	1/8	0.66	Y20T	G36-10-01
AC2010-02				1/4				
AC3010-02	AW3000	AL3000	1700	1/4	1/8	0.98	Y30T	
AC3010-03				3/8				
AC4010-03	AW4000	AL4000	3000	3/8	1/4	1.93	Y40T	G46-10-02
AC4010-04				1/2				
AC4010-06	AW4000-06	AL4000-06	3000	3/4	1/4	1.99	Y50T	
AC5010-06	AW5000	AL5000	4000	3/4	1/4	3.20	Y60T	
AC5010-10				1				



图形符号 / Symbol



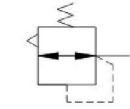
型号 Model	规格 / Specifications				配件 Accessories		放水器功能 Drain Function	自动排水型号 Auto Drain Model
	*额定流量 Rated Flow (L/min)	**接管口径 Port Size (G)	杯容量 Bowl Capacity (cm ³)	重量 Weight (kg)	托架 Bracket (2个)			
AF1000-M5	110	M5	4	0.07	-	手动排水 /Manual Drain	AF2000-01D	
AF2000-01	750	1/8	15	0.19	B240			
AF2000-02		1/4						
AF3000-02	1500	1/4	20	0.29	B340	a. 停气排水 /Air Shutoff Drain	AF3000-02D	
AF3000-03		3/8						
AF4000-03	3/8							
AF4000-04	4000	1/2	45	0.55	B440	b. 手动排水 /Manual Drain	AF4000-03D	
AF4000-06		3/4						
AF5000-06	7000	3/4	45	0.58	B540			AF4000-04D
AF5000-10		1						
AF5000-10	7000	1	130	1.08	B640	AF5000-06D	AF5000-10D	
AF5000-10		1						



产品展示 / Product display



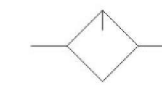
图形符号 / Symbol



型号 Model	规格 / Specifications				配件 / Accessories	
	*额定流量 Rated Flow (L/min)	**接管口径 Port Size (G)	压力表口径 Pressure Gauge Size (G)	重量 Weight (kg)	托架 Bracket	压力表 Pressure Gauge
AR1000-M5	100	M5	1/16	0.08	B120	G27-10-R1
AR2000-01	550	1/8	1/8	0.27	B220	G36-10-01
AR2000-02		1/4				
AR2500-02	2000	1/4	1/8	0.27	B220	G36-10-01
AR2500-03		3/8				
AR3000-02	2500	1/4	1/8	0.41	B320	
AR3000-03		3/8				
AR4000-03	6000	3/8	1/4	0.84	B420	G46-10-02
AR4000-04		1/2				
AR4000-06	6000	3/4	1/4	0.94		
AR5000-06	8000	3/4	1/4	1.19	B420	G46-10-02
AR5000-10		1				



图形符号 / Symbol



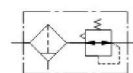
型号 Model	规格 / Specifications				重量 Weight (kg)	配件 / Accessories
	*油滴最小流量 Minimal Flow of Oil Drop(Rops/min)	*额定流量 Rated Flow (L/min)	**接管口径 Port Size (G)	杯容量 Bowl Capacity (cm ³)		托架 Bracket
AL1000-M5	4	95	M5	7	0.07	-
AL2000-01	15	800	1/8	25	0.22	B240
AL2000-02			1/4			
AL3000-02	30	1700	1/4	50	0.30	B340
AL3000-03	40		3/8			
AL4000-03	40	5000	3/8	130	0.56	B440
AL4000-04	50		1/2			
AL4000-06	50	6300	3/4	130	0.58	B540
AL5000-06	190	7000	3/4	130	1.08	B640
AL5000-10			1			



产品展示 / Product display



图形符号 / Symbol



型号 Model	规格 / Specifications				配件 / Accessories		放水器功能 Drain Function	自动排水型号 Auto Drain Model
	*额定流量 Rated Flow (L/min)	**接管口径 Port Size (G)	压力表口径 Pressure Gauge Size (G)	重量 Weight (kg)	托架 Bracket	压力表 Pressure Gauge		
AW1000-M5	100	M5	1/16	0.09	B120	G27-10-R1	手动排水 /Manual Drain	AW2000-01D AW2000-02D
AW2000-01 AW2000-02	550	1/8 1/4	1/8	0.36	B220	G36-10-01		
AW3000-02 AW3000-03		2000					1/4 3/8	1/8
AW4000-03 AW4000-04	4000		3/8 1/2	1/4	1.15	B420	G46-10-02	
AW4000-06 AW5000-06 AW5000-10		4500 5500	3/4 1					1/4



订购号 / Order

AC	2000	D	PT
规格代码 Specification code	系列代号 Series code	排水方式 Drain Type	牙型代码 Tooth code
AC, BC: 三联件 AFC, BFC: 二联件 AF, BF: 空气过滤器 AR, BR: 减压阀 AL, BL: 油雾器 AFR, BFR: 过滤减压阀	1500系列 1500 Series 2000系列 2000 Series 3000系列 3000 Series 4000系列 4000 Series	空白: 差压排水 M: 手动排水 D: 自动排水式 Blank: differential pressure draining type M: standard manual type D: automatic draining type	空白: G牙 PT: PT牙 Blank: G Thread PT: PT Thread

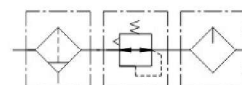
技术参数 / Specifications

保证耐压力/Ensured Pressure Resistance	1.0MPa(10kgf/cm ²)
使用压力范围/ Working Pressure	0.05~0.85MPa(8.5kgf/cm ²)
环境及流体温度/Ambient and Fluid Temperature	5~60°C
*过滤精度/*Filter Fineness	40µm
建议用油/Recommended Oil Use	透平1号油/Turbine No.1 Oil ISOVG32
阀型/Valve Type	带溢流型/With Overflow

产品展示 / Product display



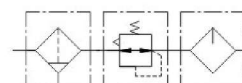
图形符号 / Symbol



型号 Model	组件 / Assembly			接管口径 Port Size	压力表口径 Pressure Gauge Size
	过滤器 Filter	减压阀 Regulator	油雾器 Lubricator		
AC1500	AF1500	AR1500	AL1500	G1/8	G1/8
AC2000	AF2000	AR2000	AL2000	G1/4	G1/8
BC2000	BF2000	BR2000	BL2000	G1/4	G1/4
BC3000	BF3000	BR3000	BL3000	G3/8	G1/4
BC4000	BF4000	BR4000	BL4000	G1/2	G1/4



图形符号 / Symbol



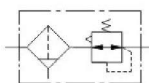
型号 Model	组件 / Assembly		接管口径 Port Size	压力表口径 Pressure Gauge Size
	过滤减压阀 Filter&Regulator	油雾器 Lubricator		
AFC1500	AFR1500	AL1500	G1/8	G1/8
AFC2000	AFR2000	AL2000	G1/4	G1/8
BFC2000	BFR2000	BL2000	G1/4	G1/4
BFC3000	BFR3000	BL3000	G3/8	G1/4
BFC4000	BFR4000	BL4000	G1/2	G1/4



产品展示 / Product display



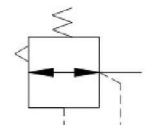
图形符号 / Symbol



型号 Model	接管口径 Port Size	压力表口径 Pressure Gauge Size
AFR1500	G1/8	G1/8
AFR2000	G1/4	G1/8
BFR2000	G1/4	G1/4
BFR3000	G3/8	G1/4
BFR4000	G1/2	G1/4



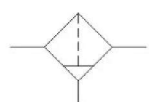
图形符号 / Symbol



型号 Model	接管口径 Port Size	压力表口径 Pressure Gauge Size
AR1500	G1/8	G1/8
AR2000	G1/4	G1/8
BR2000	G1/4	G1/4
BR3000	G3/8	G1/4
BR4000	G1/2	G1/4



图形符号 / Symbol



型号 Model	接管口径 Port Size
AF1500	G1/8
AF2000	G1/4
BF2000	G1/4
BF3000	G3/8
BF4000	G1/2



图形符号 / Symbol



型号 Model	接管口径 Port Size
AL1500	G1/8
AL2000	G1/4
BL2000	G1/4
BL3000	G3/8
BL4000	G1/2



订购号 / Order

OFC

规格代码
Specification code
OFC: 二联件 OFC: Two Elements
OFR: 过滤减压阀 OFR: Filter Regulator
OR: 减压阀 OR: Air Regulator

G1/8

接管口径
Joint Pipe Bore
G1/8
G1/4
G3/8
G1/2
G3/4
G1

MINI

系列代号
Series code
MINI系列 MINI Series
MIDI系列 MIDI Series
MAXI系列 MAXI Series

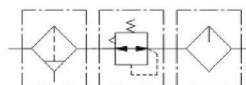
D

排水方式
Drian Type
空白: 差压排水 手动排式
D: 自动排水式
Blank: Differential pressure+manual draining type
D: Automatic draining type

技术参数 / Specifications

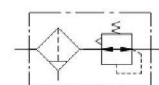
保证耐压力 / Ensured Pressure Resistance	1.5MPa(15kgf/cm ²)
使用压力范围 / Working Pressure	0.05~1.2MPa(12kgf/cm ²)
环境及流体温度 / Ambient and Fluid Temperature	5~60°C
*过滤精度 / *Filter Fineness	25µm
建议用油 / Recommended Oil Use	透平1号油 / Turbine No.1 Oil ISOVG32
阀型 / Valve Type	带溢流型 / With Overflow

图形符号 / Symbol



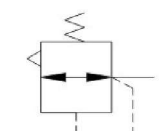
型号 Model	额定流量 Rated Flow (L/min)	接管口径 Port Size	压力表口径 Pressure Gauge Size	结构特点 Features of Structure
OFC-G1/8-MINI	700	G1/8	G1/8	带水分离器的烧结过滤器 Sintered Filter With Water Spartor
OFC-G1/4-MINI	1000	G1/4	G1/8	
OFC-G3/8-MINI	1200	G3/8	G1/8	油雾型自动可节流式 Direct Constant-density Lubricator
OFC-G3/8-MIDI	2000	G3/8	G1/4	
OFC-G1/2-MIDI	2600	G1/2	G1/4	MINI/MIDI: 膜片式减压阀 (Diaphragm Type Regulator)
OFC-G3/4-MIDI	2600	G3/4	G1/4	
OFC-G3/4-MIXI	7000	G3/4	G1/4	MAXI: 活塞式减压阀 (Piston Regulator)
OFC-G1-MAXI	8000	G1	G1/4	

图形符号 / Symbol



型号 Model	额定流量 Rated Flow (L/min)	接管口径 Port Size	压力表口径 Pressure Gauge Size	结构特点 Features of Structure
OFR-G1/8-MINI	700	G1/8	G1/8	带水分离器的烧结过滤器 Sintered Filter With Water Spartor
OFR-G1/4-MINI	1000	G1/4	G1/8	
OFR-G3/8-MINI	1200	G3/8	G1/8	
OFR-G3/8-MIDI	2000	G3/8	G1/4	MINI/MIDI: 膜片式减压阀 (Diaphragm Type Regulator)
OFR-G1/2-MIDI	2600	G1/2	G1/4	
OFR-G3/4-MIDI	2600	G3/4	G1/4	
OFR-G3/4-MIXI	7000	G3/4	G1/4	MAXI: 活塞式减压阀 (Piston Regulator)
OFR-G1-MAXI	8000	G1	G1/4	

图形符号 / Symbol



型号 Model	额定流量 Rated Flow (L/min)	接管口径 Port Size	压力表口径 Pressure Gauge Size	结构特点 Features of Structure
OR-G1/8-MINI	800	G1/8	G1/8	
OR-G1/4-MINI	1500	G1/4	G1/8	
OR-G3/8-MINI	1700	G3/8	G1/8	MINI/MIDI: 膜片式减压阀 (Diaphragm Type Regulator)
OR-G3/8-MIDI	3200	G3/8	G1/4	
OR-G1/2-MIDI	3500	G1/2	G1/4	
OR-G3/4-MIDI	3500	G3/4	G1/4	MAXI: 活塞式减压阀 (Piston Regulator)
OR-G3/4-MIXI	11000	G3/4	G1/4	
OR-G1-MAXI	11500	G1	G1/4	